



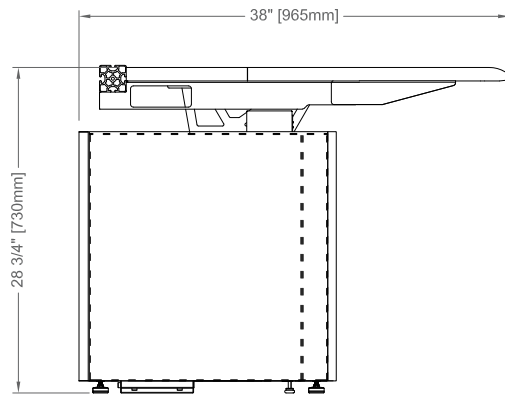
**TIME BASE
CONSOLES**

C3 Product Guide

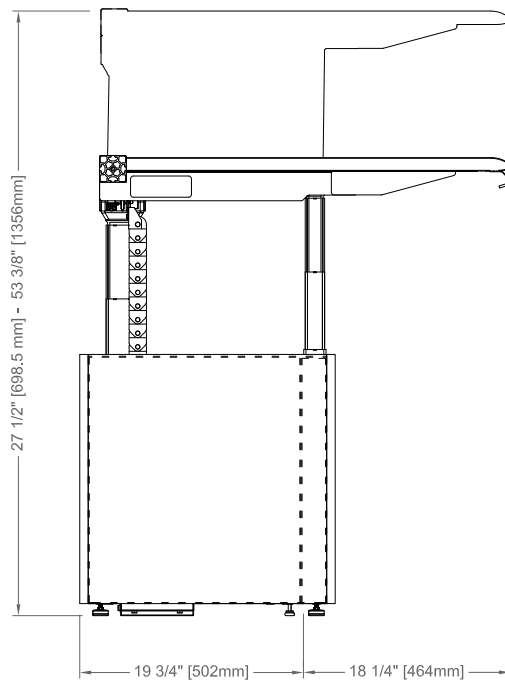


TABLE OF CONTENTS

3	OVERVIEW
	SERIES
4	TRANSITIONS & FRAMES
5	HEIGHT ADJUSTABILITY
6	CABLE MANAGEMENT
7	OPTIONS
9	ACCESSORIES



C3 - FIXED HEIGHT

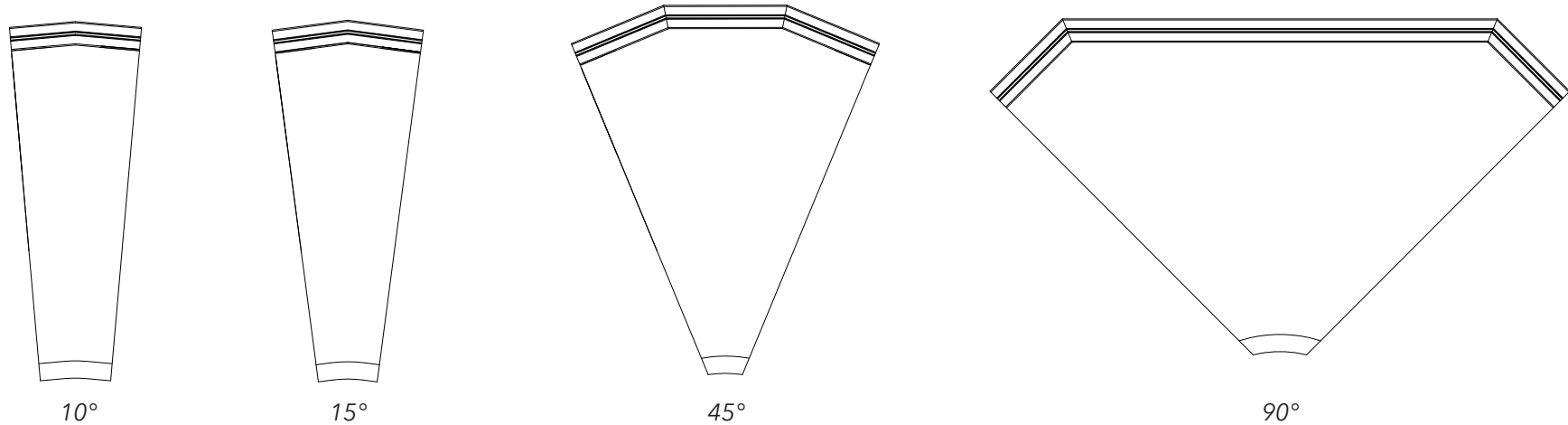


C3E - HEIGHT ADJUSTABLE



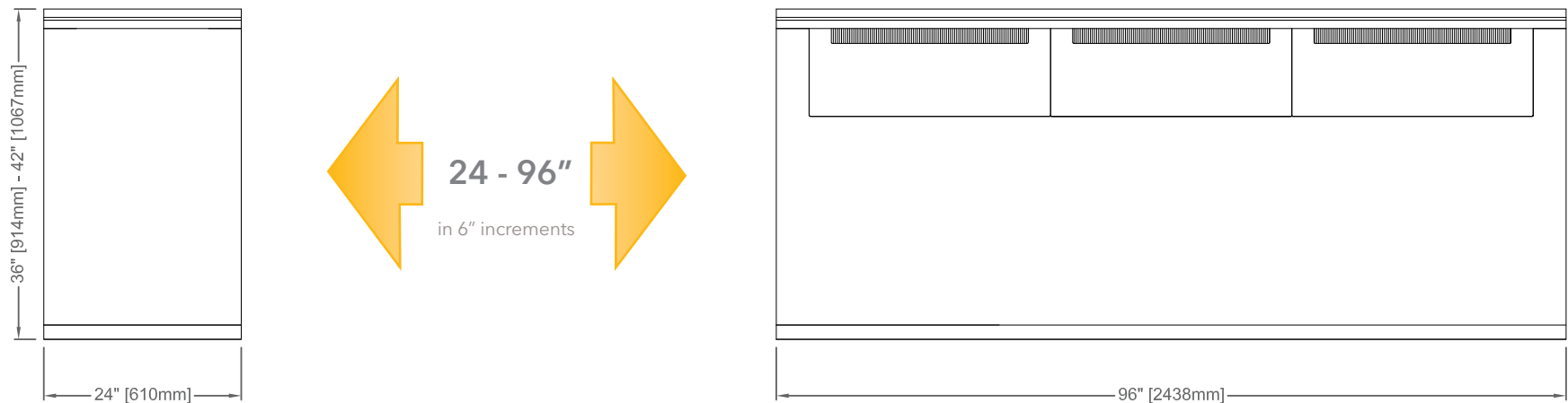
The C3 Series Consoles are built and warrantied to a 24/7 standard. All C3 variants are based on a single steel base frame with modular reconfigurable parts. Linear, curved, wedge, and corner units are available. Linear modules measure between 24 and 96 inches wide.

Dimensions shown are our suggested standards that meet applicable ANSI/BIFMA/ADA requirements. Deeper worksurfaces or base extensions are available to accommodate different equipment requirements.



Modular frames and transitions form the overall structure of each unique C3 console system. Frames range from 24 to 96 inches (610 - 2438 mm) while transition pieces come in a variety of standard and custom angles to allow for required user access and equipment storage.

Frames



Overview

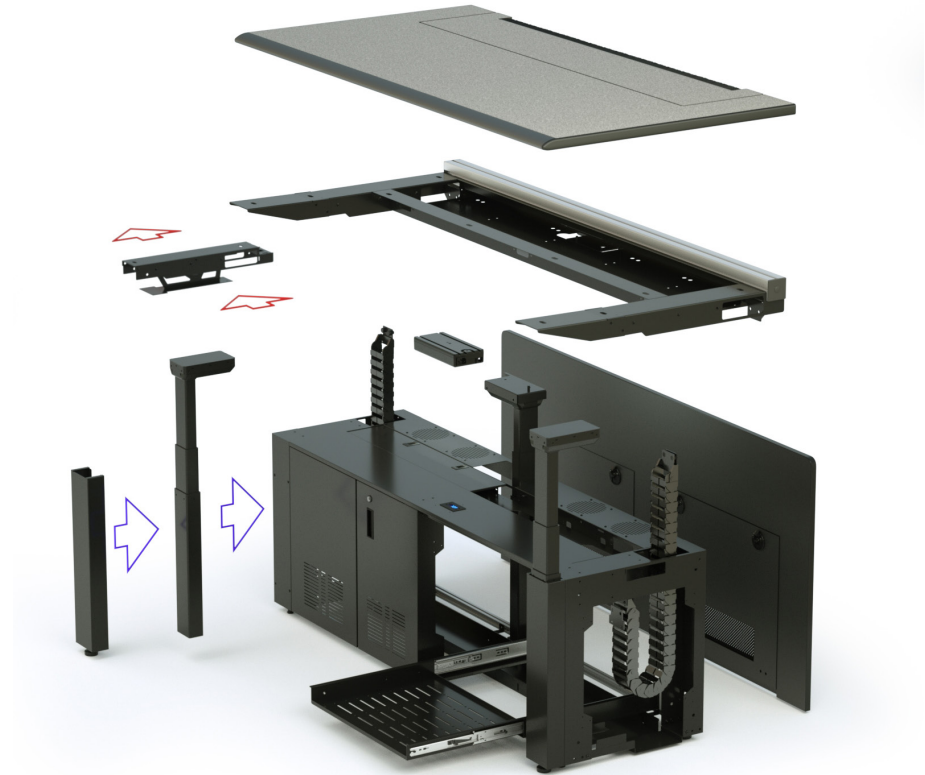
Height Adjustability

C3 Series is designed for height-adjustability. Conversion kits are available to change your existing C3 to a height-adjustable version (C3E) with minimal interruption to the operators. All C3E consoles make use of a linear actuator column with built in anti-collision technology. Each column pair is capable of lifting approximately 500 lbs (226 kg) and engineered to distribute the lifting capacity throughout the console.



- 0.1W standby power
- Integrated anti-collision technology
- Programmable as imperial or metric
- Able to set min or max height within range

Options Controllers



PADDLE

- Standard controller
- Memory positions and display with light reminder



WORKSURFACE

- Upgrade option
- Easily integrated into tabletop
- Memory positions and display



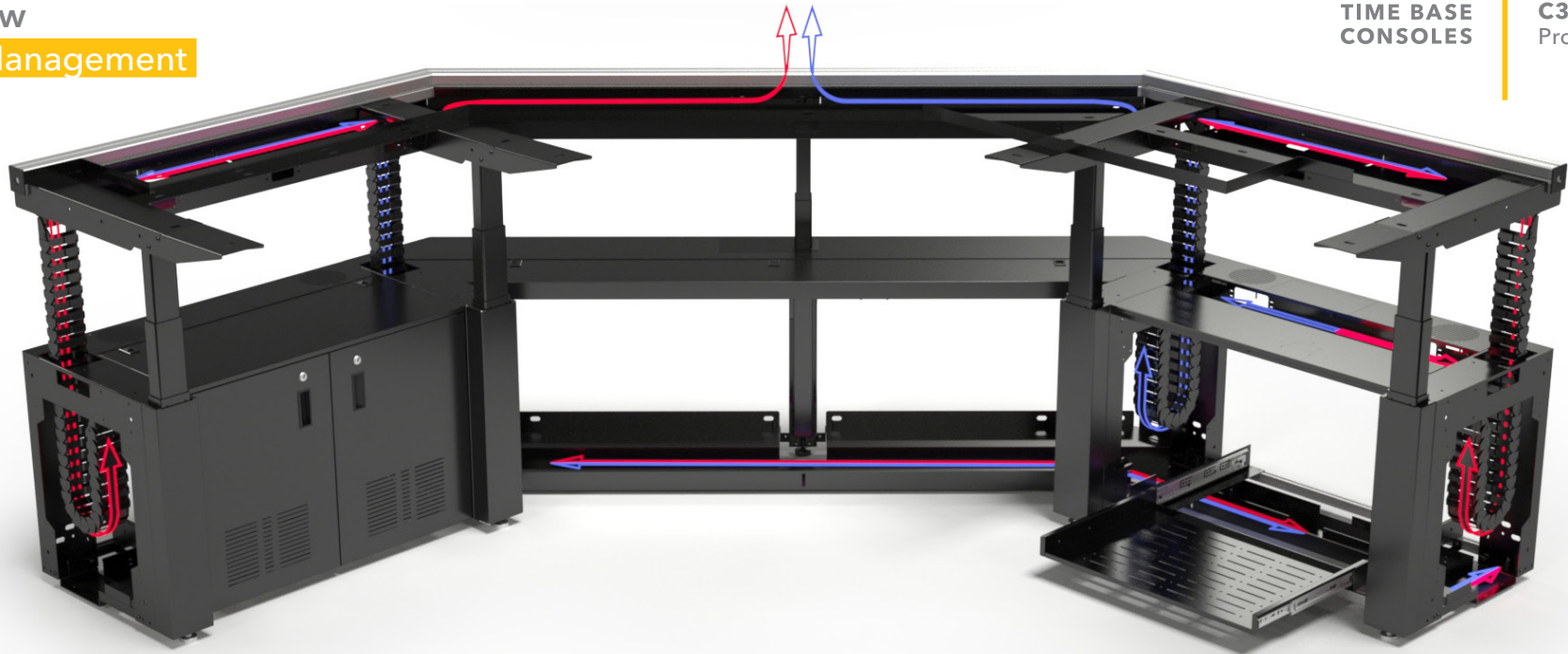
EDGE MOUNT

- Option for multiple planes
- Non-Bluetooth compliance
- Memory positions and display

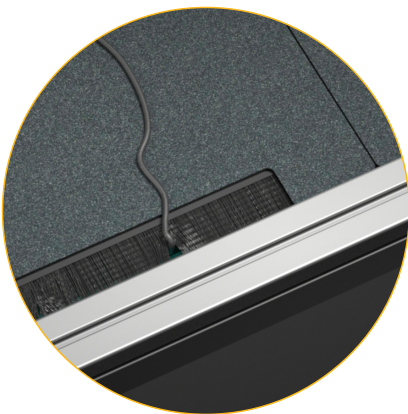


DESK CONTROL

- App for iOS or Android
- Pairs to multiple desks
- Sit to Stand reminders

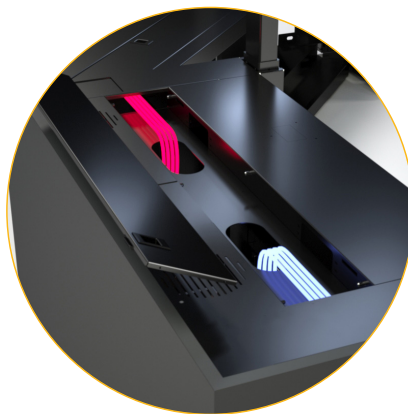


Cable management is one of the most critical aspects of any piece of technical furniture. We have integrated (3) horizontal and (4) vertical cable raceways into C3 for optimal separation of power and data cables.



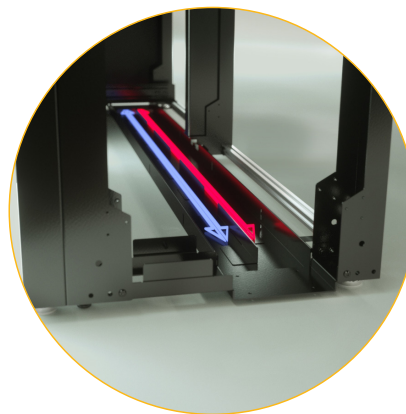
WORKSURFACE

Toolless removable panel with brush strip



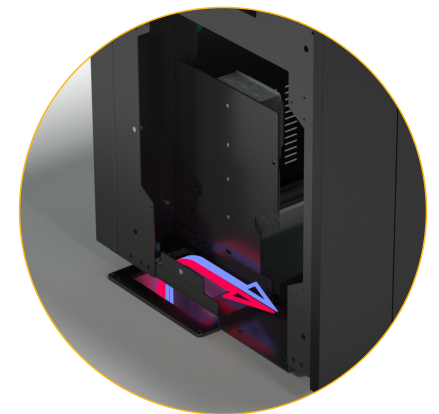
TOP FRAME

Removable panel and drop downs



STEEL CABLE DIVIDER

Located at worksurface,
base top, and bottom



ACCESS POINTS

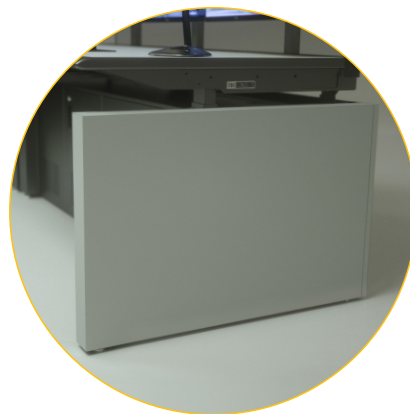


End Panel / Front Access

Console shown with standard end panel, extended rear panel, stock black steel front and storm teakwood laminate rear doors. Front doors are available standard as hinged or bi-fold depending on the size required. For more end/rear options visit our [finishes page](#).



WRAP



SLAB



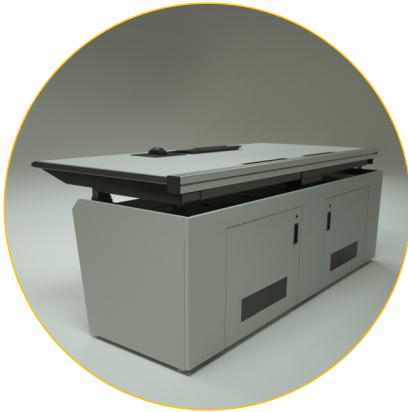
HINGED FRONT DOOR
Standard



BI-FOLD FRONT DOOR
Shown in non-stock white

Options

Rear Panel



STANDARD



EXTENDED



HIGH



PLEXI

Rear Access

C3 Consoles have a built-in rear back panel that can be the same height as the side panel, extended to the extrusion or up to 42" (106.6 cm) high. This panel allows for inclusion of acoustic fabric, white board, acrylic, or slatwall as required. An acrylic "plexi" shroud can be added to the C3E console to conceal wires as the console travels up and down.



HINGED



LATCHED



CUTOUT



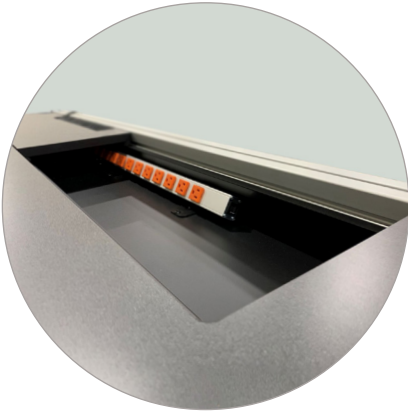
STEEL
Upgrade Option

Accessories

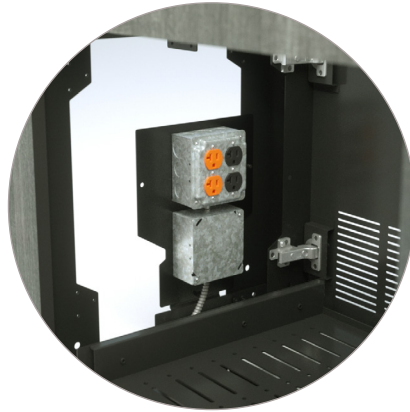
Power Options

TIME BASE
CONSOLES

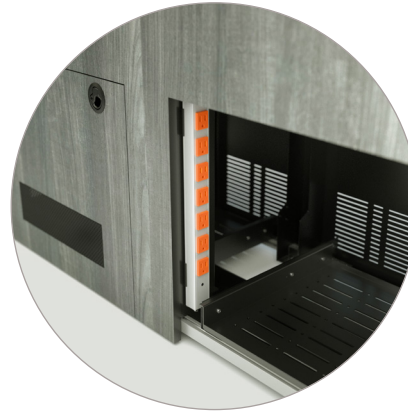
C3
Product Guide



WORKSURFACE POWER STRIP



JUNCTION BOX



INTERNAL BASE POWER STRIP



CONVENIENCE POWER

Also available under
worksurface & rear Trac

Base Storage

Power management is one of the most critical aspects of any piece of technical furniture. We have a variety of ways to handle internal and convenience power to the console and peripherals connected to the C3.



FIXED SHELF

Available in three sizes



PULL-OUT SHELF

Front or rear facing



RACK RAIL



FILE PEDESTAL

Accessories

Upper Modules

TIME BASE CONSOLES

C3 Product Guide

Infinite horizontal monitor mounting positions. Toolless worksurface cable access allow for direct cable access without fishing cables through holes or pushing through gaskets thus minimizing cable chaffing. Turrets are interchangeable with this access points for equipment that requires user interface such as E-Stops and switches.



CABLE ACCESS PANEL
(Single-sided brush strip)



CABLE ACCESS PANEL
(Double-sided brush strip)



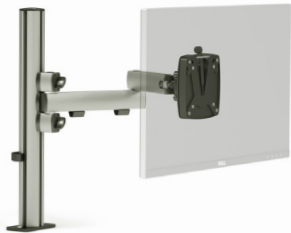
2RU
(15" Max equipment depth)



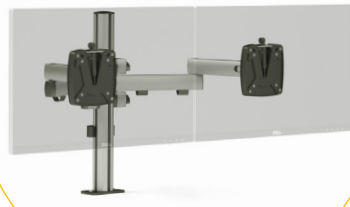
4RU
(Freestanding)

Articulating Arms

Consoles can mount monitors from a rear extrusion "trac" which allows for flexibility in mounting positions. Infills are included as a standard upper module with the ability to include equipment turrets that can sink into the worksurface.



POLE MOUNT



DOUBLE ARMS

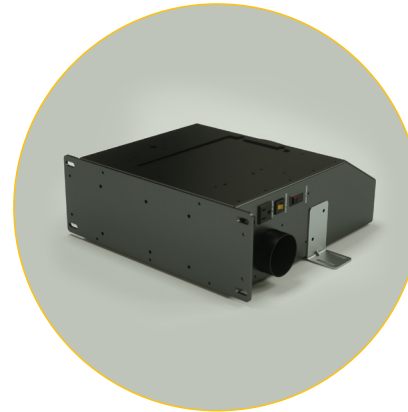


1:1 ARMS



PNEUMATIC

Designed with 24/7 facility operators in mind. The personal environment heating/cooling system, operated by touch screen, can be utilized to control lighting and sit to stand functionality.



ENVIRONMENTAL CONTROL
Cooling & Heating



TASK LIGHTING

Thermal Management

The C3 comes with integrated passive heat dissipation through it's generously vented top frame and front/rear access panels. Thermostat and Fan Kits can be added per frame for active heat management. Under floor cold air can be ducted through leg access points.



THERMOSTAT



FAN KITS
Equipment cooling





For more information about our consoles, including CAD & Revit models, please visit tbconsoles.com.

You may also contact one of our Account Managers for a free design review by emailing sales@tbconsoles.com.



170 Rodeo Dr.

Edgewood, NY 11717, USA

Phone 631.293.4068

Fax 631.293.4075

Toll Free 1.888.CONSOLE

tbconsoles.com

All specifications and other information contained in this guide are based on the latest product information available at the time of printing. TBC Consoles is dedicated to product improvement and therefore reserves the right to make changes to the specifications of this and other products.

© 2023 TBC Consoles. Not to be reproduced wholly or in part without specific written permission from TBC Consoles.