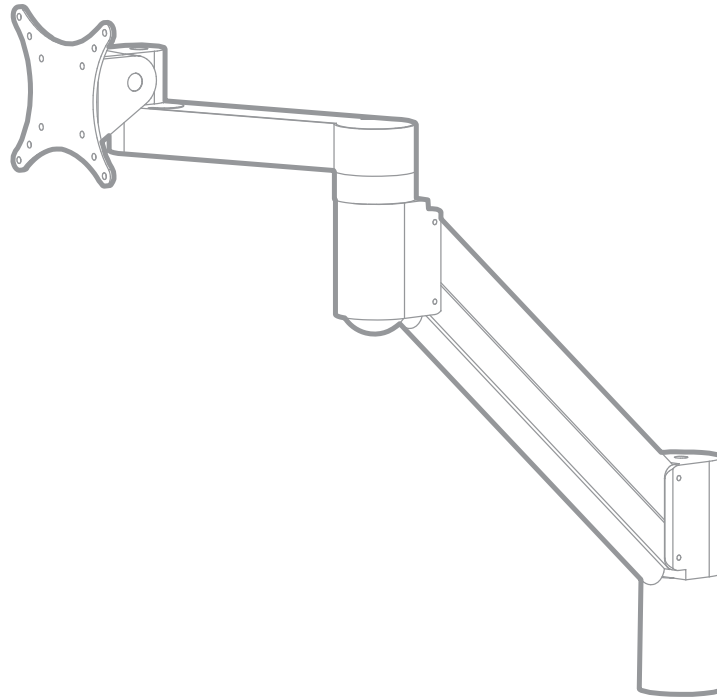


FP-7500

INSTALLATION INSTRUCTIONS

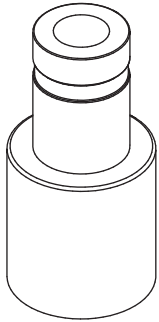


CONTENTS

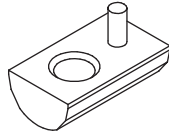
REPLACEMENT PARTS	PAGE 2
MOUNTING CUP PARTS	PAGE 2
MOUNTING CUP ASSEMBLY.....	PAGE 2
ARM PARTS	PAGE 3
INSTALLATION INSTRUCTIONS	PAGE 4
COUNTER BALANCE	PAGE 5



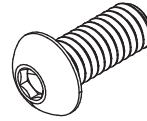
MOUNTING CUP PARTS


A

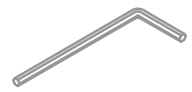
Mounting Cup


B

Roll-in T-Nut


C

3/4" Button-head Screw

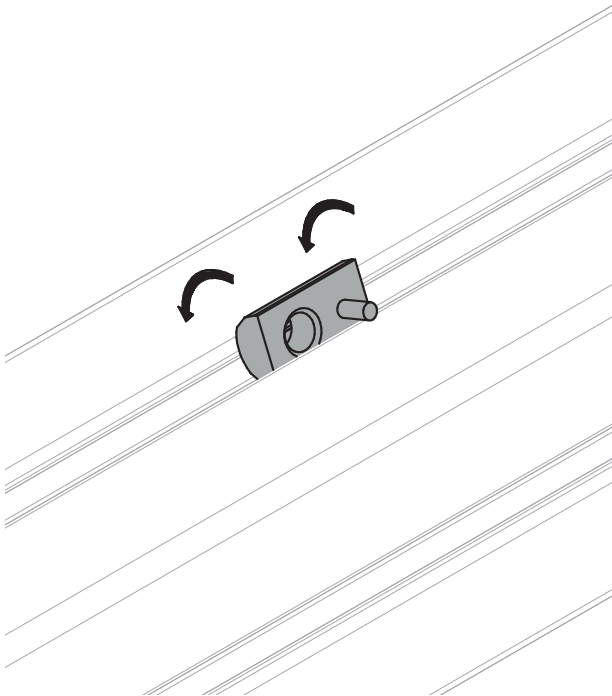


3/16" Hex Wrench

MOUNTING CUP ASSEMBLY

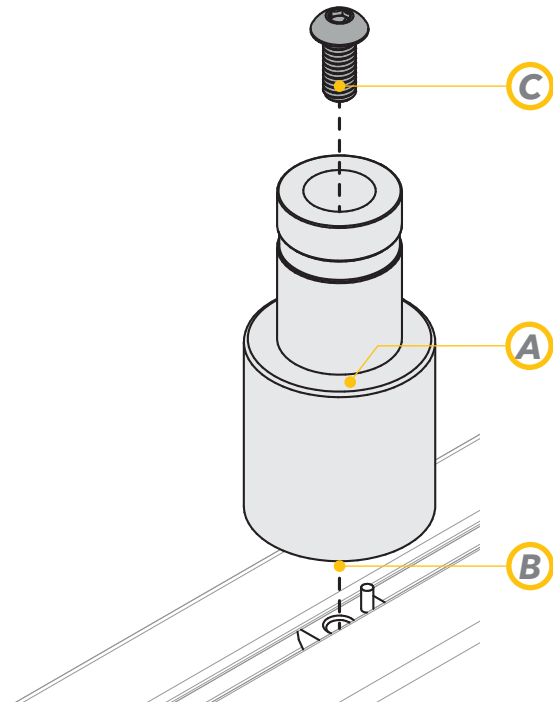
Step 1

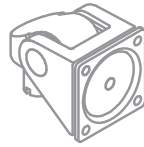
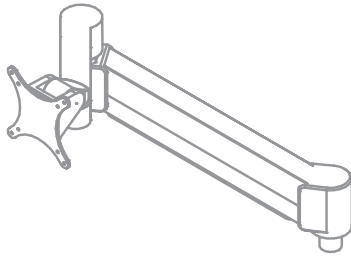
Place Roll-in T-Nut (C) into the slot of the Trac extrusion and position to desired location using the flex handle.



Step 2

Align the hole in the Mounting Cup (A) to correspond with the Roll-in T-Nut (C). Put Button-head screw (D) into the Mounting Cup (A) and firmly attach the assembly to the Roll-in T-Nut using a 3/16" hex wrench.





A

Spring Assisted
Monitor Tilter



B

75/100mm VESA
Adapter Plate



C

10-32 x 3/8" Flat Head
Philips Screw Qty (4)



D

M4 x 12mm Pan Head
Philips Screw Qty (4)



E

Dog Washer
Qty (1)



F

10-32 x 3/8" FhPMS
w/ Lock Patch
Qty (1)



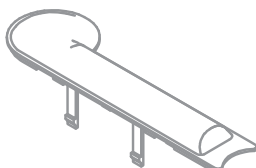
G

7/32" Allen Wrench
Qty (1)



H

3/32" Allen Wrench Qty (1)



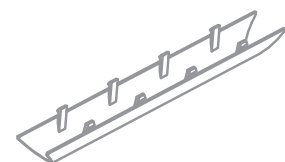
I

Forearm Cap
Qty (1)



J

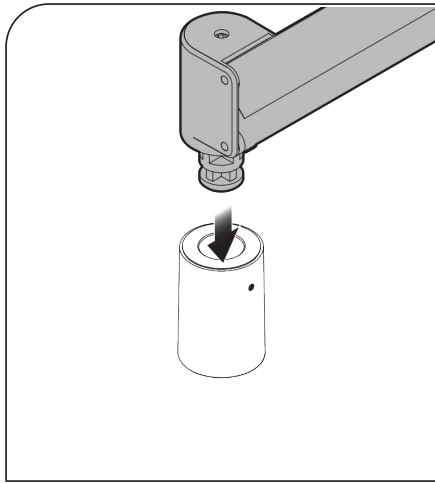
End-cap Bumper
Qty (1)



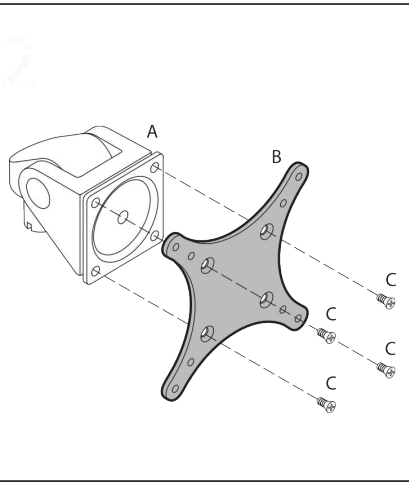
K

Cable Cap
Qty (1)

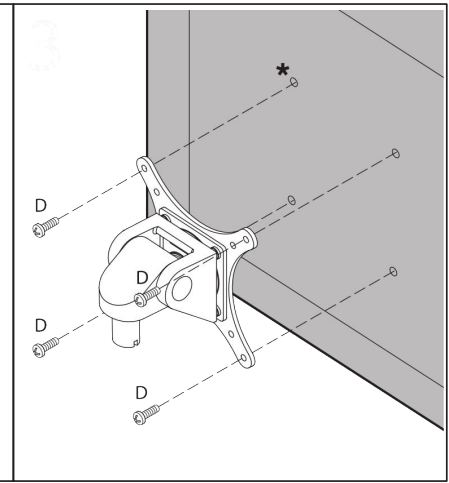
Step 1



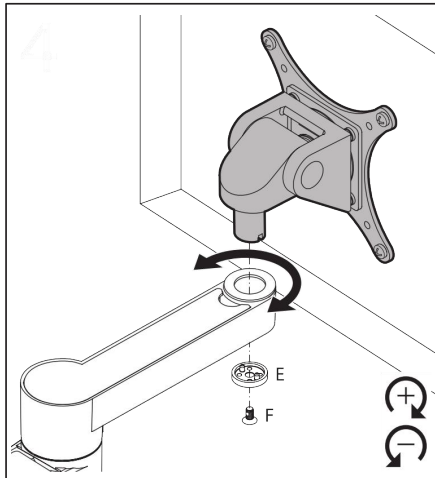
Step 2



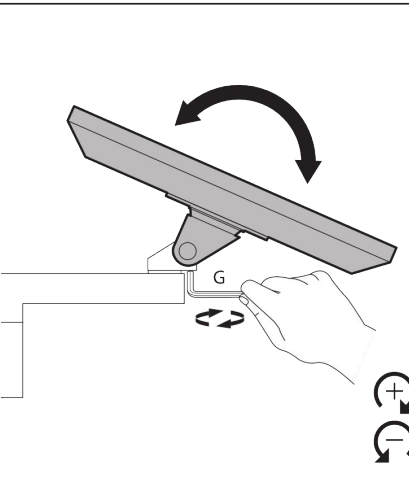
Step 3



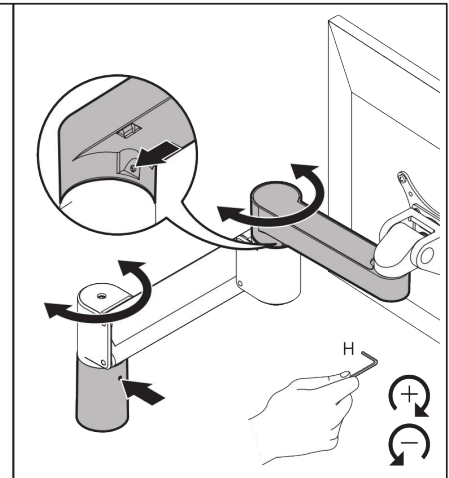
Step 4



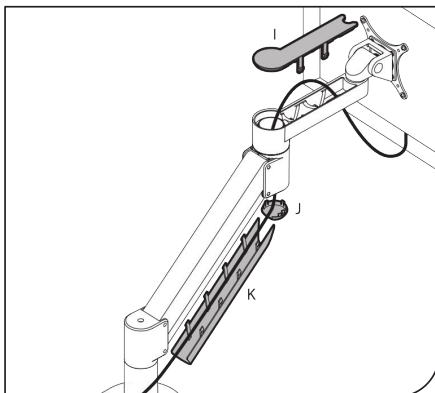
Step 5



Step 6



Step 7



WEIGHT CAPACITIES

7500 arms come in 4 different weight capacities and are selected based on the monitors specified.

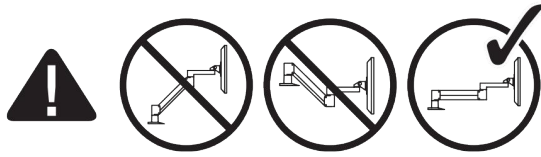
In the event of a change, please consult the chart to determine the correct piston arm strength.

7500-500	2 - 13 lbs
7500-800	6 - 21 lbs
7500-1000	8 - 27 lbs
7500-1500	12 - 40 lbs

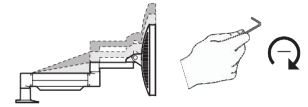
COUNTER BALANCE

Step 1

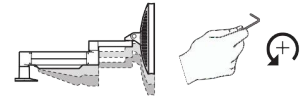
IMPORTANT - Monitor must be on the arm and the arm must be in the mount.



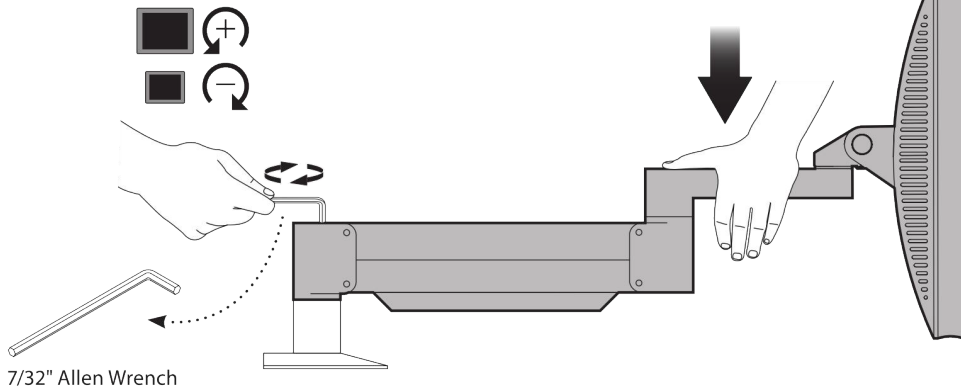
Press the arm down to approximately parallel with the desk prior to turning the strength adjustment screw.



If the arm drifts upward, turn the adjustment screw clockwise.



If the arm drifts downward, turn the adjustment screw counter clockwise.

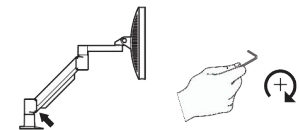


NOTE: Depending on the weight of your monitor, you may have to make 15-20 turns.

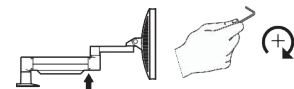
Step 2

In some instances, further counterbalance adjustments are needed to allow the arm's instant height adjustment function to work properly.

If your arm is not staying in position after performing Step 1, follow these steps:

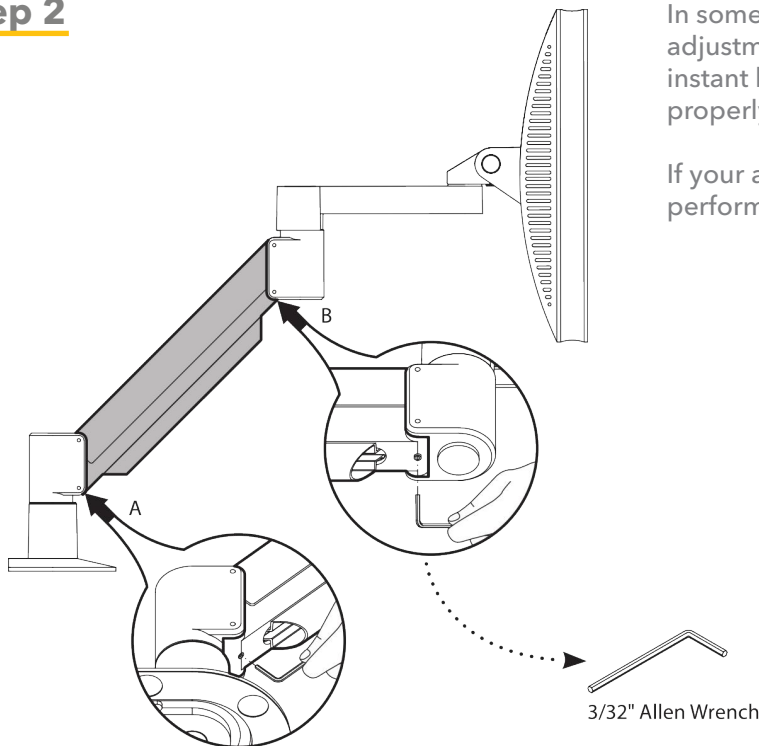


With arm in raised position, tighten set screw (A).



With arm in horizontal position, tighten set screw (B).

Do not over tighten screws.



NOTES

TBC Consoles provides a robust warranty on all our products, however, incorrect installation could void this warranty. Save time by engaging with our expert installation team, contact support@tbconsoles.com.

All patterns, designs, and specifications are the intellectual property of TBC Consoles and may not be reproduced without prior written consent.

These assembly instructions are meant as a guide. As we provide custom consoles based on a modular standard design, it is not possible to cover all possible customizations. In the event that a customization applies for your project beyond this guide then a detailed drawing or additional instructions will be provided.



tbconsoles.com

All specifications and other information contained in this installation guide are based on the latest product information available at the time of printing. TBC Consoles is dedicated to product improvement and therefore reserves the right to make changes to the specifications of this and other products.

© TBC Consoles. Not to be reproduced wholly or in part without specific written permission from TBC Consoles.