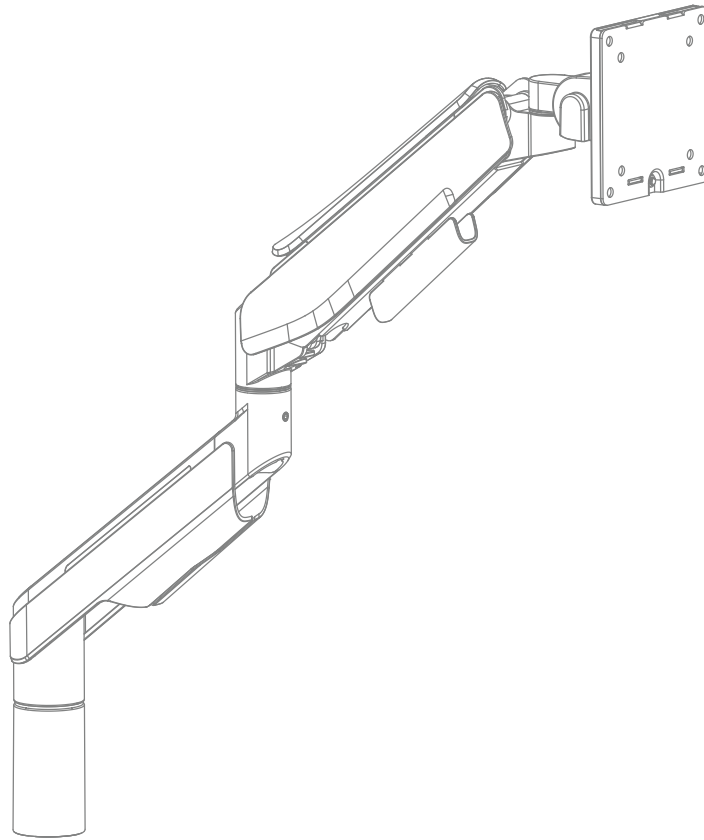


FP-HDMA

Ultra-wide Screen Arm Instructions



CONTENTS:

| | |
|---------------------------------|--------|
| replacement parts..... | PAGE 2 |
| mounting cup parts | PAGE 2 |
| mounting cup assembly..... | PAGE 2 |
| arm parts..... | PAGE 3 |
| installation instructions..... | PAGE 4 |
| Alternate mounting option | PAGE 7 |



Read instructions prior to assembly. Contains parts that can be damaged if assembled incorrectly or in the wrong sequence.

Verify that you have all the parts required to assemble the console. There may be extra hardware included. Exact hardware and parts required are listed on the same page as the step where they are needed.

Assistance is required during some parts of the assembly; look for this 'Helper' symbol:



Caution:

Incorrect installation could void your warranty. Have peace of mind by contacting a TBC certified technician. To locate one close to you, email support@tbconsoles.com.

Ensure that the arm and configuration are consistent with the intended use of the product. TBC is not responsible for any failure to adhere to these guidelines.

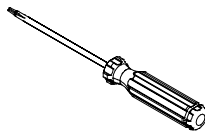
Needed for Installation:



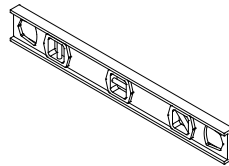
3/16" Hex
Wrench



4mm Hex
Wrench



Phillips
Screwdriver



Level

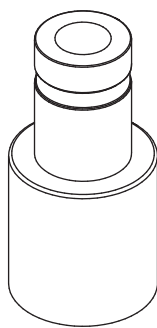


Helper

To purchase TBC replacement parts or learn about other TBC products, visit us online or call. www.tbconsoles.com / 1-888-CONSOLE or (631) 293-4068.

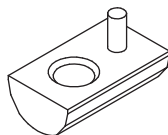


MOUNTING CUP PARTS



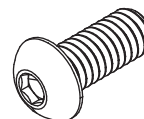
A

Mounting Cup



B

Roll-in T-Nut



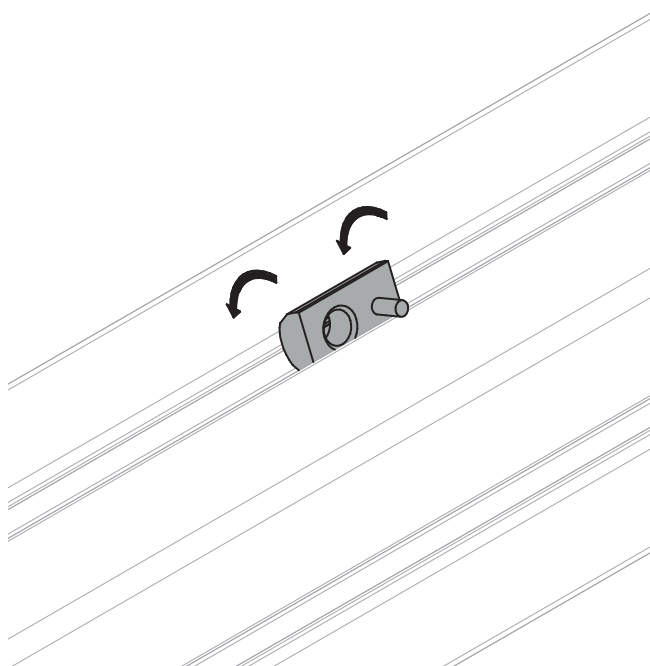
C

3/4" Buttonhead Screw

MOUNTING CUP ASSEMBLY

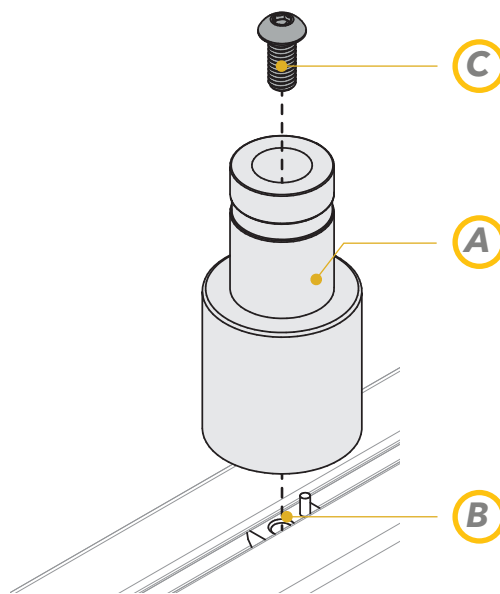
Step 1

Place Roll-in T-Nut (B) into the slot of the Trac extrusion and position to desired location using the flex handle.



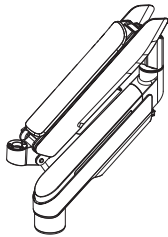
Step 2

Align the hole in the HDPE Spacer (B) to correspond with the Roll-in T-Nut (C). Put Buttonhead screw (D) into the Mounting Cup (A) and firmly attach the assembly to the Roll-in T-Nut using a 3/16" hex wrench.



ARM PARTS

AA



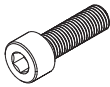
Spring Arm
Qty (1)

BB



VESA Head*
Qty (1)

CC



VESA Connector Bolt
Qty (1)

*VESA head packed under cardboard box containing spring arm

DD



VESA Connector Washer
Qty (1)

EE



D5 Washer
Qty (4)

FF



M4 x 12 Screw
Qty (4)

GG



M5 x 12 Screw
Qty (4)

INSTALLATION INSTRUCTIONS

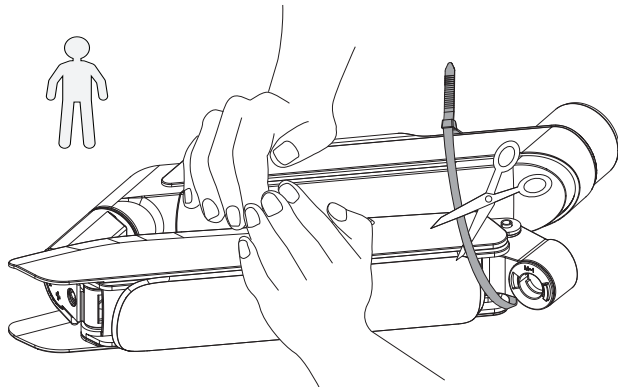
Step 1



****STORED ENERGY HAZARD****

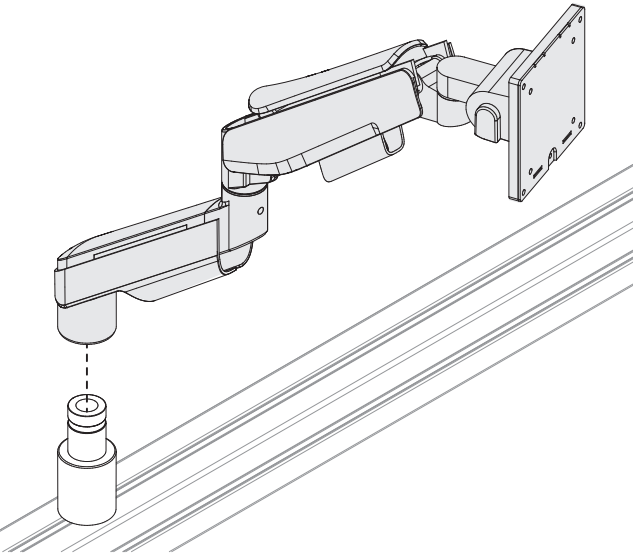


Firmly hold the two halves of the spring arm together and have a helper cut off the cable tie around the spring arm.



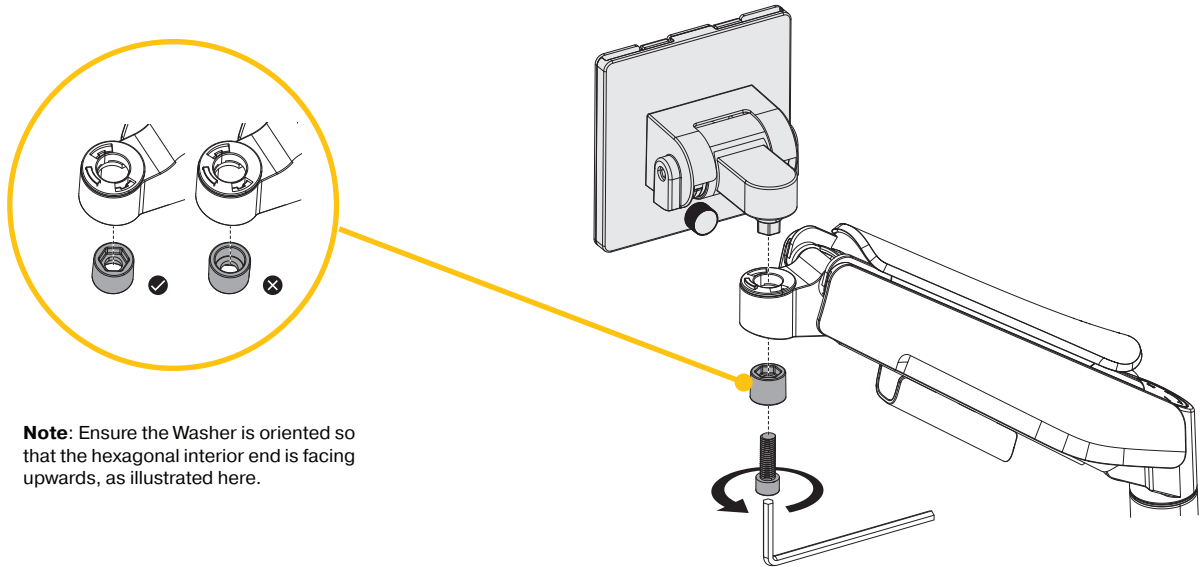
Step 2

Place arm on pre-installed mounting cup.



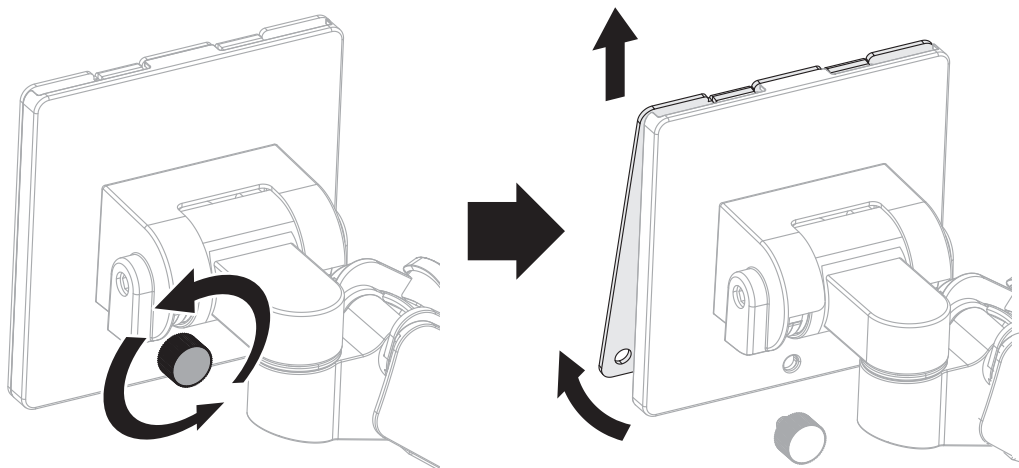
Step 1

Connect the VESA Head (BB) to the end of the Spring Arm using VESA Connector Washer (AA) and VESA Connector Bolt (CC). Tighten until secure using a 6mm Hex Wrench.



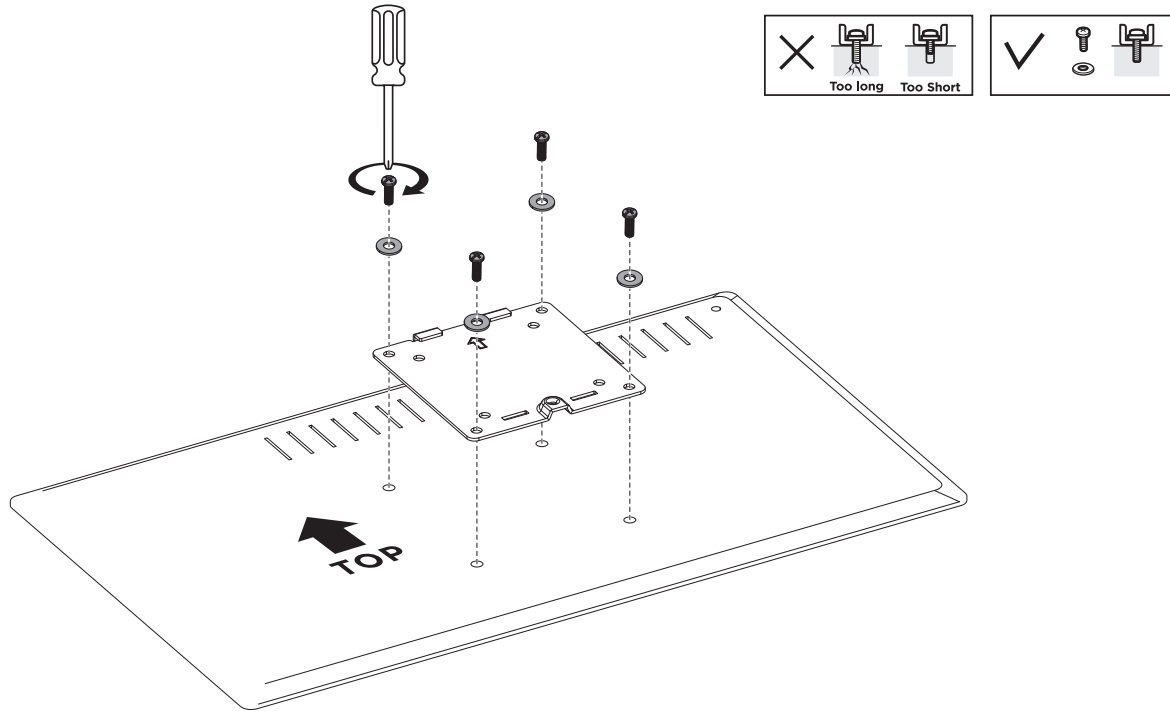
Step 2

Remove the thumb screw from the back of the VESA Head, pull the bottom of the VESA Plate on the front away then up to remove it.



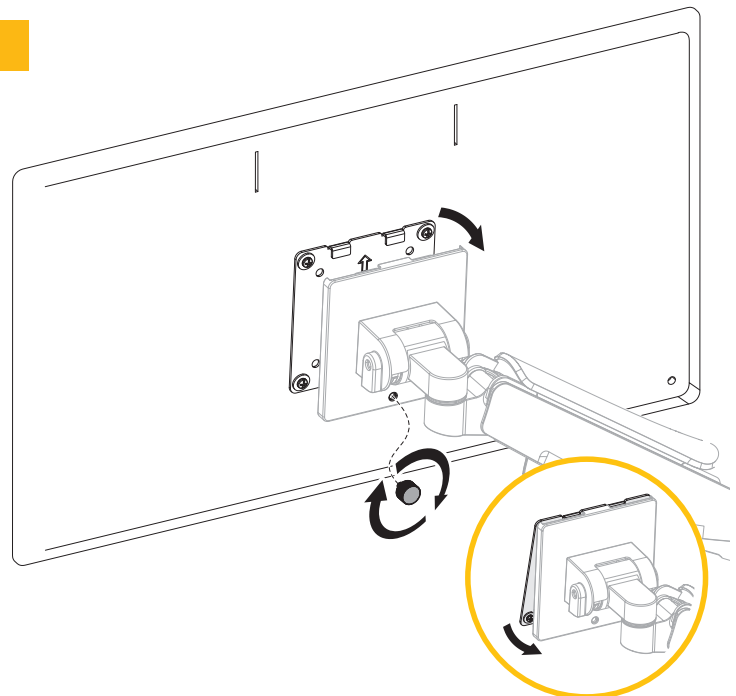
ATTACHING THE VESA PLATE

Select the appropriate size mounting bolt [FF, GG] for your monitor's mounting holes and verify the length of the VESA bolt is not too long. If the VESA bolt is too long or the pattern is larger than 100 x 100 then a washer and/or a larger plate may be necessary for your particular mount. These can be obtained by contacting TBC support. If you are unsure of the correct bolt size for your display refer to your monitor user manual or contact the monitor manufacturer for sizing information. Install the VESA Plate onto the back of the monitor using the selected Bolts [FF or GG] and Washers [EE] and ensure that the arrow on the plate is pointing up to the top of the monitor.



ATTACHING THE MONITOR

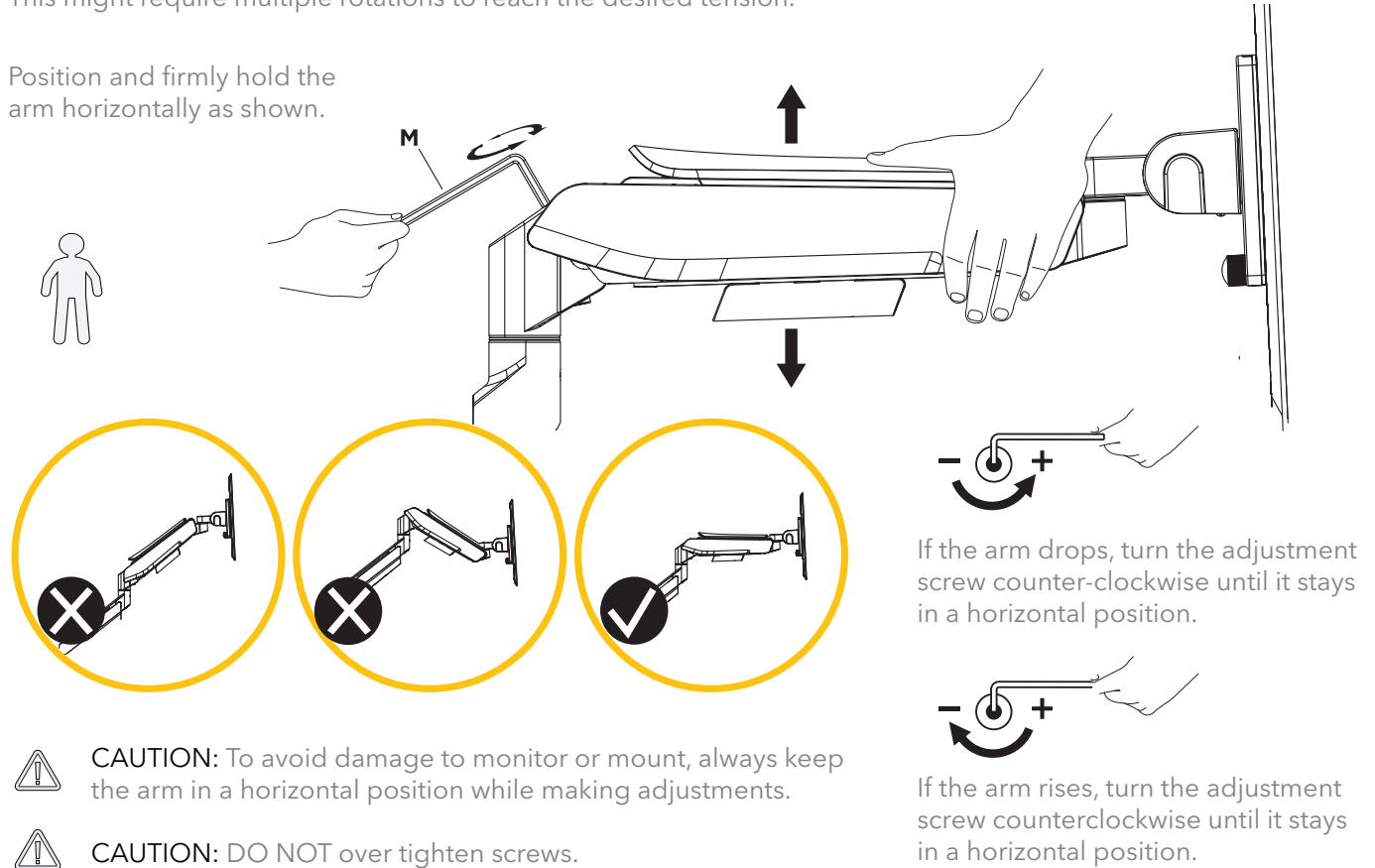
Hang the monitor on the end of the VESA Head by hooking the top of the plate back onto the end of the arm, and then lower it down into position. Reinstall the thumb screw to secure it in place.



WEIGHT BALANCING

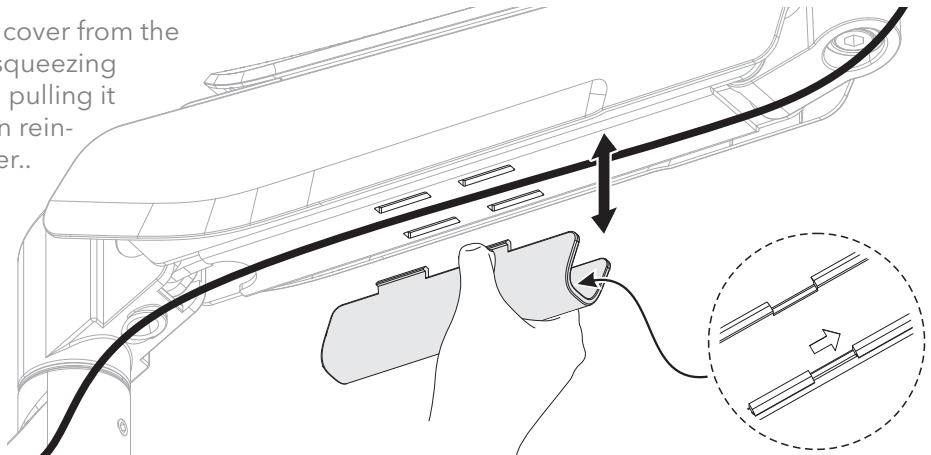
Gas Spring tension may need to be adjusted to suit the weight of the monitors. To weight balance the two gas spring arms, begin by pushing the arm down to the lowered position, then use a 6mm Hex Wrench to adjust the nut as pictured above, turning counterclockwise toward the + (plus) sign for heavier monitors, increasing the tension and clockwise toward the - (minus) sign for lighter monitors, lowering the tension. Adjust until the arm does not raise back to the highest position or sink to the lowest position when released. This might require multiple rotations to reach the desired tension.

Position and firmly hold the arm horizontally as shown.



CABLE MANAGEMENT

Remove the cable management cover from the underside of the spring arm by squeezing both sides of the cover and then pulling it out. Run any cables beneath then reinstall the cable management cover.



- TBC Consoles provides a warranty on all our products. Incorrect installation could void this warranty. Save time by engaging with our expert installation team, contact support@tbconsoles.com
- All patterns, designs, and specifications are the intellectual property of TBC Consoles and may not be reproduced without prior written consent.
- These assembly instructions are meant as a guide. As we provide custom consoles based on a modular standard design, it is not possible to cover all possible customizations. In the event that a customization applies for your project beyond this guide then a detailed drawing or additional instructions will be provided.



170 Rodeo Dr.

Edgewood, NY 11717, USA

Phone 631.293.4068

Fax 631.293.4075

Toll Free 1.888.CONSOLE

tbconsoles.com

All specifications and other information contained in this installation guide are based on the latest product information available at the time of printing. TBC Consoles is dedicated to product improvement and therefore reserves the right to make changes to the specifications of this and other products.

© TBC Consoles. Not to be reproduced wholly or in part without specific written permission from TBC Consoles.