



**TIME BASE  
CONSOLES**

**Rack Cart**  
Product Guide



## TABLE OF CONTENTS

<b>3</b>	<b>VERTICAL SERIES</b>
<b>4</b>	<b>STANDARD SERIES</b>
<b>5</b>	<b>PODCAST</b>
<b>6</b>	<b>QUIETCART</b>
<b>7</b>	<b>OPTIONS</b>

# Overview

## V-Series

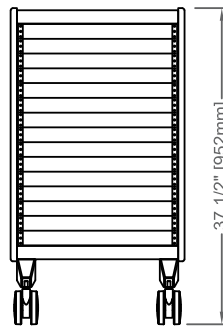
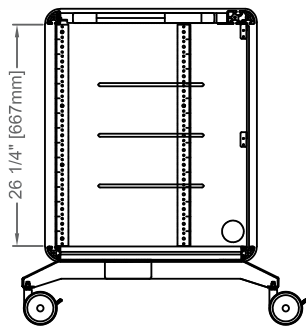
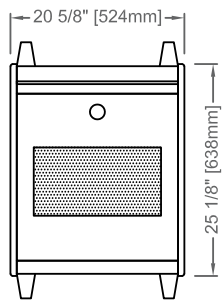


The V-Series vertical cart is offered in three standard sizes, but can be customized to meet your unique needs. These units feature a compact design that maximizes space efficiency.

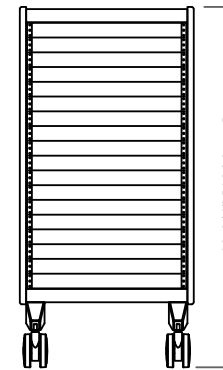
- Available in 15, 18, & 24RU\*
- Rear trac for peripherals such as monitor arms
- Vented rear door and top
- Easy cable management routing
- Front and rear rack rail - 10/32 standard
- Open base, rack shelves/drawers available
- Heavy-duty 4" casters



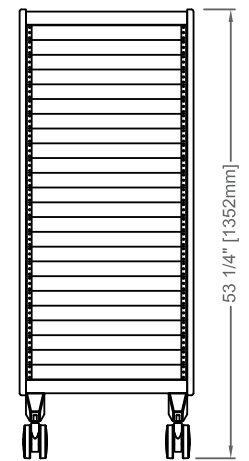
\* Custom sizes available



15 RU



18 RU



24 RU

# Overview

## S-Series

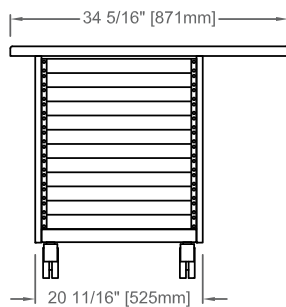
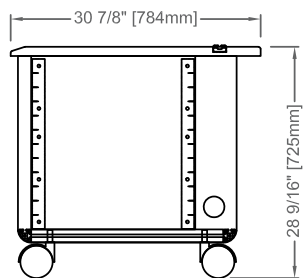


With the Standard series cart, you can choose from different profiles featuring either a straight or nested worksurface to extend your desktop. Designed to match the look and quality of our SmartTrac consoles.

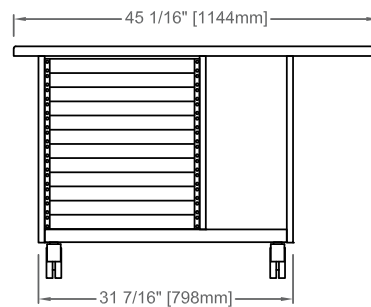
- Available in 1, 1.5, & 2 bay units
- Straight or nestable worksurface
- Half bay can be orientated left or right
- Rear trac for peripherals such as monitor arms
- Angled front option available
- Front and rear rack rail, 10/32 standard
- Heavy-duty 4" casters



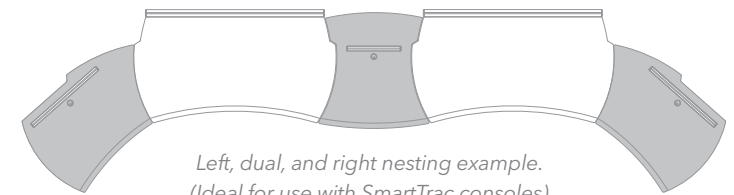
*Angled 1 Bay with phenolic edge*



1 BAY



1.5 BAY



# Overview

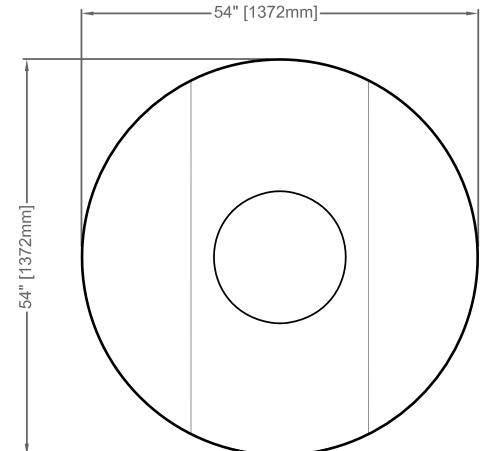
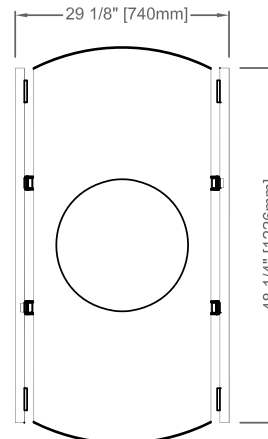
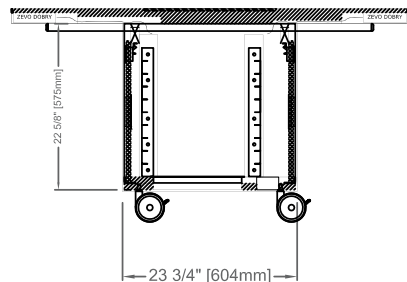
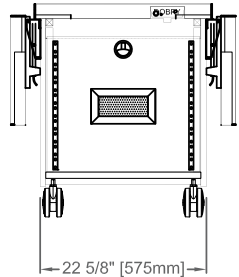
## Mobile Podcast

A versatile mobile cart perfect for tight spaces, offering an optional flip-down countertop, serving as a podcast station or mobile tech table. Its customizable countertop is designed to accommodate small audio interfaces like the Zevo Dorby. Tailored to meet individual needs, this cart allows for further customization, ensuring a solution that fits any setup.

- Easily accessible audio interfaces
- Vented front and rear doors
- Front and rear rack rail, 10/32 standard
- Heavy-duty 4" casters
- Optional TSS pole & headphone holders
- Optional flip-down arms

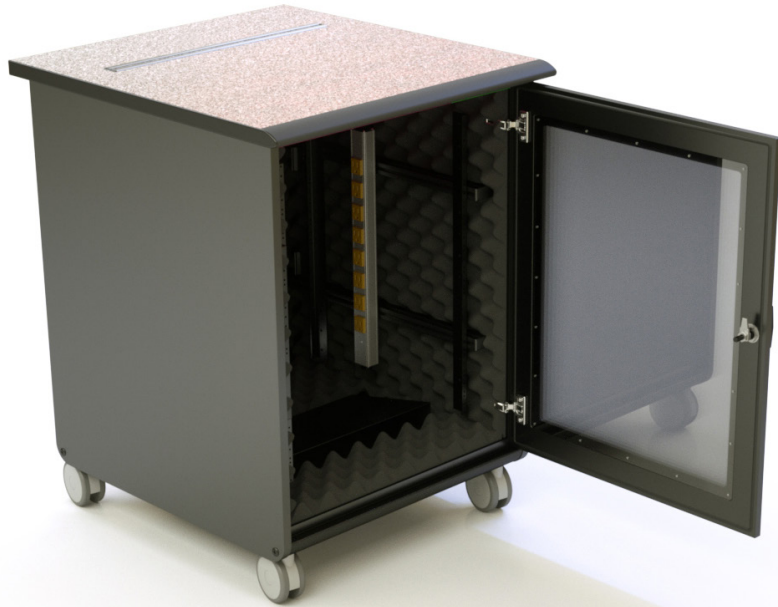


*Shown with optional circular laminate inlay*



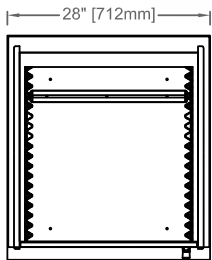
# Overview

## QuietCart

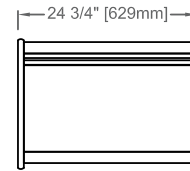
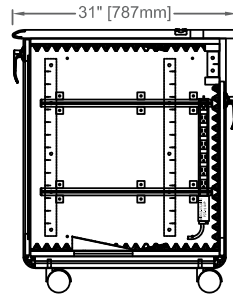
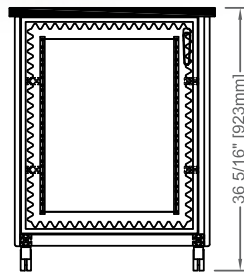


The Quiet Cart (QC) and Quiet Cart-LT (QLT) are enhanced versions of our standard and vertical carts, designed to reduce sound transmission and minimize noise in sound-sensitive environments. They feature lockable front and rear doors, as well as a 2RU space for rear-mounted, thermostatically controlled fans.

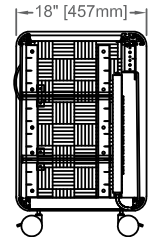
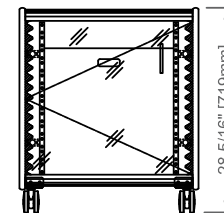
- Programmable thermostat
- 25 or 50 CFM fans (21.5 & 28 dBA)
- QC features heavy-duty doors and bottom panel
- Front and rear rack rail, 10/32 standard
- Embedded or rear Trac for accessory mounting
- Heavy-duty 4" casters



QUIETCART



QUIETCART-LT





## Rack Cart

### Options

Rack Carts have a wide variety of options available to optimize your workspace, for more details speak with a representative or see our Rack Cart [page](#). To explore available finish options, please visit our [website](#).



INTERNAL POWER



PLEXI DOOR



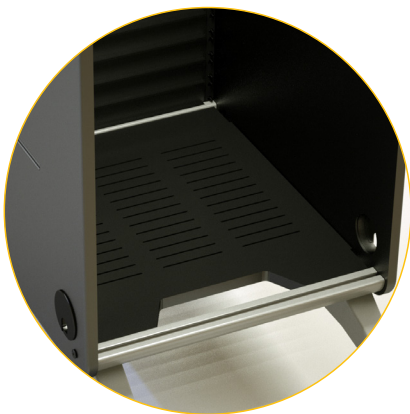
QC DOOR



THERMAL CONTROL  
with 25 or 50 CFM fans

### Base Options

Our storage solutions feature a range of options designed to meet the diverse needs of various industries, environments, functionalities, and preferences. For more, visit us at [www.tbconsoles.com](http://www.tbconsoles.com)



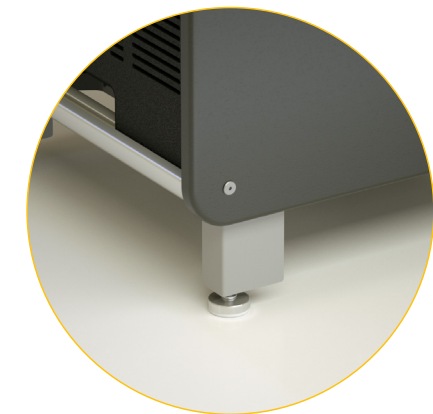
LOWER SHELF



PULL-OUT SHELF  
Front or rear facing



DRAWER



FIXED FOOT

For more information about our consoles, please visit [tbconsoles.com](http://tbconsoles.com).

For a free design review or quotation, contact our sales department by emailing [sales@tbconsoles.com](mailto:sales@tbconsoles.com).



[tbconsoles.com](http://tbconsoles.com)

All specifications and other information contained in this guide are based on the latest product information available at the time of printing. TBC Consoles is dedicated to product improvement and therefore reserves the right to make changes to the specifications of this and other products.

© TBC Consoles. Not to be reproduced wholly or in part without specific written permission from TBC Consoles.