



ST4-CPU2

PRODUCT DESCRIPTION:

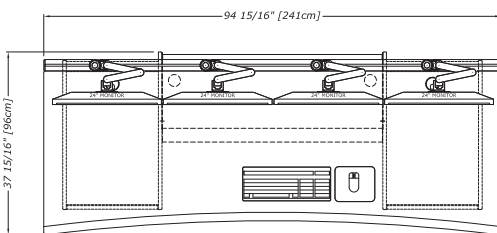
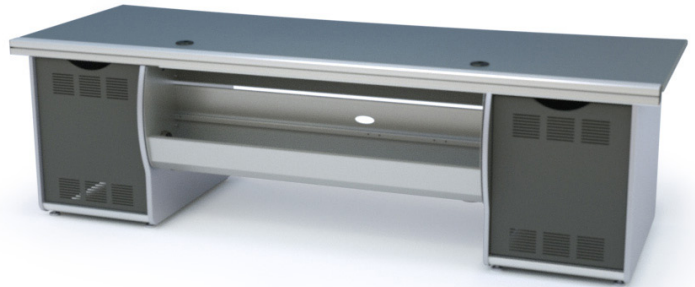
Shark Grey 3DL standard finish with ergonomic chamfered front edge

Stable leg design with levelers: Anodized aluminum leg and steel foot with silver finish

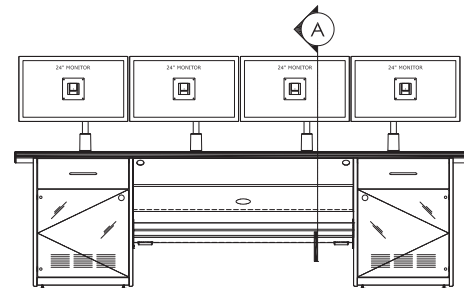
The console can be finished with straight or flared ends, with or without rack modules between 2 and 8 RU which are sold separately

FEATURES:

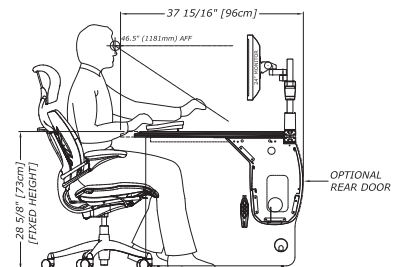
- Fixed height
- Multiple surface and edge finish options available
- Swing out front door access and optional rear door
- Full length rear trac for articulating monitor or speaker arms and other accessories
- Large cable core enclosure with vertical divider for power/data and cable management
- Optional mounted power strip and internal device shelf available to organize your equipment



PLAN VIEW



FRONT ELEVATION



SECTION A

Notes: Shown with optional monitor arms.

